

DAN-Boards

Professional ground protection mats

made from 100% recycled plastic



DAN-Boards Classic

Sustainable ground protection mat made from 100% recycled LDPE plastic

DAN-Board Classic is a robust and sustainable ground protection mat made from 100% recycled polyethylene (LDPE). It is designed to protect surfaces on construction sites, at events, in agriculture, and in landscaping projects.

The strong material structure makes it impact-, weather-, and slip-resistant—even under changing ground and weather conditions. Its high dimensional stability also ensures a stable and reliable surface for temporary roads, work areas, and protection of sensitive ground.

Advantages:

- Made from 100% recycled LDPE plastic
- Weather and UV resistant
- Easy to handle and transport
- Long service life
- Slip-resistant surface for increased safety
- Custom logo printing for strong brand visibility
- Made in Denmark

Material	100% recycled plastic
Standard surface	Structure 1 mm
Color	Black and natural Custom colors available on request
Processing	Cutting, drilling, milling, forming, welding
Temperature resistance	From -40 to 70 °C
Standard sizes	2000 x 1000 mm, 2400 x 1200 mm, 3000 x 1000 mm
Thickness	6-20 mm



"We use DAN-Board Classic ground protection mats on several of our projects, especially when working on grass areas or soft ground. They are easy to handle, quick to install, and provide a stable base for our machinery. At the same time, we avoid damage to the ground, which saves both time and follow-up work."





DAN-Boards Xtreme

The ground protection mat with superior grip

DAN-Board Xtreme is developed for demanding tasks where extra high strength and stability are required. The mat is made from 100% recycled LDPE plastic, combining high load capacity with a sustainable material choice.

The robust construction with a 4 mm profile provides enhanced slip resistance and a secure grip. This makes Xtreme especially suitable for construction sites, events, agriculture, and civil engineering projects with heavy machinery and traffic.

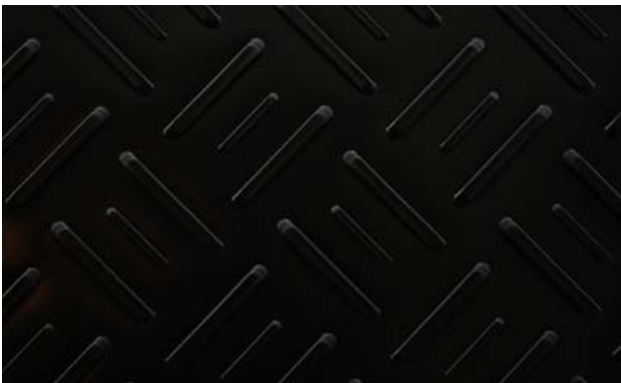
Advantages:

- Made from 100% recycled plastic
- Extra slip-resistant with 4 mm profile
- Very high strength and stability
- Weather and UV resistant
- Long service life
- Custom logo printing for strong brand visibility
- Made in Denmark

Material	100% recycled plastic
Standard surface	Structure 1 mm
Color	Black and natural
Processing	Cutting, drilling, milling, forming, welding
Temperature resistance	From -40 to 70 °C
Standard sizes	2000 x 1000 mm, 2400 x 1200 mm, 3000 x 1000 mm
Thickness	18 or 22 mm



"We chose DAN-Board Xtreme for a project with heavy traffic and challenging ground conditions, and it made a noticeable difference. The mats remain stable even under high loads, and the extra grip ensures a safe driving surface—even in wet conditions. It's a solution we can confidently use again and again."





DAN-Boards Flex

A flexible design for multiple applications

DAN-Board Flex is a double-sided ground protection mat made from 100% recycled LDPE plastic. With a structured surface on both sides, the mat can be flipped and used for different types of traffic, while also improving stability on uneven terrain. The patterned underside increases friction against the ground, enhancing slip resistance on wet, muddy, or sloped surfaces.

The top side is optimized for pedestrian traffic and light vehicles, while the reverse side is ideal for heavier traffic requiring extra grip and stability.

Advantages

- Made from 100% recycled LDPE plastic
- Extra slip-resistant with patterned surface for better terrain grip
- Very high strength and stability
- Weather and UV resistant
- Long service life
- Custom logo printing on the front side
- Made in Denmark

Material	100% recycled plastic
Standard surface	Structure 1 mm
Color	Black and natural
Processing	Cutting, drilling, milling, forming, welding
Temperature resistance	From -40 to 70 °C
Standard sizes	2000 x 1000 mm, 2400 x 1200 mm
Thickness	16, 20 or 24 mm



“DAN-Board Flex offers a level of flexibility not seen before. The mats can be flipped depending on the task—one side for light traffic and the other for heavier machinery. This means only one solution is needed on-site, while grip and stability are improved on uneven and wet terrain.”



ACCESSORIES

To optimize workflows around DAN-Boards ground protection mats, specially designed accessories have been developed to simplify handling, installation, and removal—saving both time and resources.



Connector Plus

With this connector, up to four DAN-Boards mats can be easily connected at once.

Product number: 0101



Single connector

Connect DAN-Boards mats easily and securely using a solid plastic base and stainless steel fastening.

Product number: 0102



Hook

With this connector, up to four DAN-Boards mats can be connected at once.

Product number: 0001



U-Connector

Connect and anchor two DAN-Boards securely to the ground at the same time.

Product number: 0002



H-Connector

On even ground, two mats can be quickly and easily connected.

Product number:
0103 (>15 mm mats)
0104 (<15 mm mats)



Accessory box

Get robust and organized storage for all your connectors.

Product number:
0018 (500 × 250 × 250 mm)
0013 (600 × 350 × 350 mm)



Handles and holes

For easier transport, handling, and installation, handles and holes can be added to all DAN-Boards mats as needed.



Printed logo

Increase visibility and recognition by printing your logo and recycling symbol on the mats.

Product number: 0007



Transportbox - small

Made of galvanized steel for optimal transport and storage of DAN-Boards mats.

Size: 2,000 × 1,000 mm
Product number: 1001



Transportbox - large

Both boxes are stackable and feature side protection for maximum safety and easy handling.

Size: 2,400 × 1,200 mm
Product number: 1002



Vandværksvej 5
7439 Karup
Denmark



+45 97 100 200
danrec@danrec.dk



www.danrec.eu

Would you like a personalized quote or do you have any questions? Contact the Key Account Manager in your area.