



DANREC

THE GREEN CHOICE 

+ **novus**:HM

TERRA-GRID E[®] 35

- Ground stabilization without surface sealing
- Reduction of stormwater fees is possible
- Infiltration capability for precipitation
- Green spaces remain intact
- High load-bearing capacity with substructure
- Driveable in all weather conditions

SECURING WITH A SYSTEM

Your specialist for landscaping, riding arena construction, airfield and golf course construction



+45 97 100 200 | www.danrec.eu

TERRA-GRID E[®]35

Application in Landscaping:

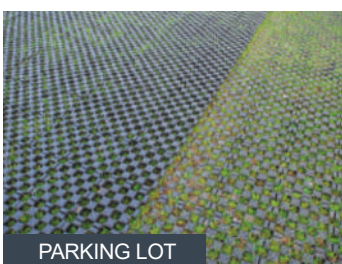
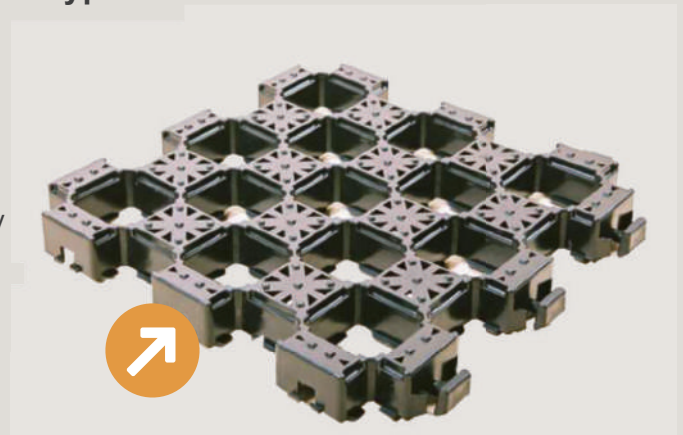
- Easy and quick to install
- Even uneven surfaces can be stabilized – flexible grid connections adapt to the existing ground
- Installation without a substructure is possible – integrated barbs in the root zone firmly anchor the surface
- Can also be laid on existing green areas
- Expansion elements between individual panels absorb changes due to temperature fluctuations
- Greening or gravel filling is possible
- Safe – slip-resistant thanks to studs and interrupted ribs

Terra-Grid E[®]35 features two different surface types and thus offers two installation options:

1. The closed side facing up

Existing lawn areas are stabilized without causing any permanent damage to the turf.

Installation is done without a substructure. The surfaces are drivable but not sealed.



Applications: Parking spaces | Parking areas | Fire department access and driveways
Firefighting operation areas | Campsites | Container storage areas
Shoreline and slope stabilization | Shoulder reinforcement | Erosion control

TERRA-GRID E[®]35

Our contribution to the environment:

- Terra-Grid E[®]35 is made from pure-grade polyethylene regranulate – recycled material sourced from the “Yellow Bag”/bin system
- Terra-Grid E[®]35 is 100% recyclable
- Terra-Grid E[®]35 is Made in Germany and represents short transport routes directly from the manufacturer
- We strive for sustainability in production through electricity from renewable sources, partially self-generated



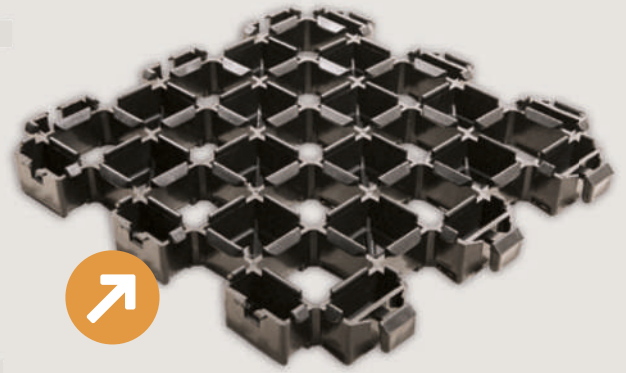
In 2021, TERRA-GRID E[®]35 was awarded the RAL quality mark for recycled plastic products according to RAL-GZ 806.

2. The closed side facing down

On existing substructure, according to the planned load, Terra-Grid E[®]35 can be greened or filled with gravel, sand, etc.

Thanks to the high proportion of support ribs and additional filling of the chambers, pressure is evenly distributed.

Load-bearing up to 160 tons per m², break-proof, frost-resistant Environmentally neutral, resistant to road salt, acids, and oil, UV-resistant. High installation efficiency thanks to pre-connected panels of 1.1 m²



DRIVEWAY



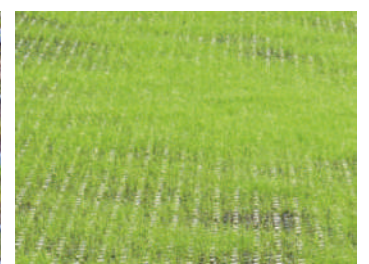
FILLED WITH GRAVEL



FILLED WITH SAND



PLANT NURSERY



TERRA-GRID E[®]35 Delivered pre-connected in 1.1 m² panels for quick installation.

This corresponds to 12 individual panels measuring 30.2 x 30.2 cm.

Height: 3,5 cm

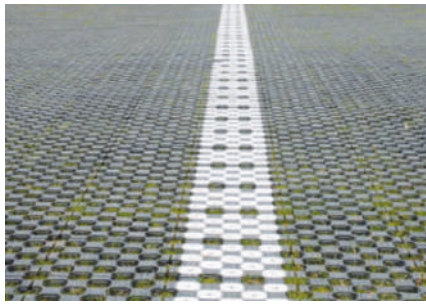
Rib thickness: 5 mm

Pallets: 80 m² /ca. 500 kg

TERRA-GRID E[®]35 System components

Markings for parking spaces in parking lots

- Suitable for the openings in the grid, approx. 5 x 5 cm
- Color: white, yellow, or custom
- Can be installed retroactively



Big Marker for marking parking spaces, edge marking

- Size: 33 x 33 cm
- Color: white, yellow, or custom
- Highly visible
- Slip-resistant, with studs on the surface
- Can also be used as cover plates on plastic grids for path stabilization
- Evenly load-bearing



DANREC A/S

Vandværksvej 5

7470 Karup J

DENMARK

+45 97 100 200

www.danrec.eu

danrec@danrec.dk